

Flat 15 Thornes Hall, 28, Castle Street, Shrewsbury, SY1 2BQ  
£825 Per Month





Flat 15 Thornes Hall, 28, Castle Street, Shrewsbury, SY1 2BQ

**£825 Per Month**

VIRTUAL TOUR AVAILABLE - Superb opportunity to rent a high quality one bedroom apartment in a recently renovated residential development in the heart of historic Shrewsbury. The development benefits from gated parking, secure bike store, lift access to second floor and high quality fixtures and fittings throughout. Situated in one of Shrewsbury's most recognisable buildings, the apartments occupy a fantastic position on this historic street a stone's throw from the castle, library and railway station.

Available: 15/08/25

## Description

Comprising: Generous communal entrance hall including lift to first & second floor, attractive communal staircase, communal landing, private entrance hall including large store cupboard, superb modern kitchen including oven, induction hob, full sized integrated fridge / freezer and integrated dishwasher, living & dining area, attractive shower room with walk in shower and high end fittings, master bedroom. The development benefits from a communal bike store and allocated (gated) parking for each apartment. Blinds included. EPC B



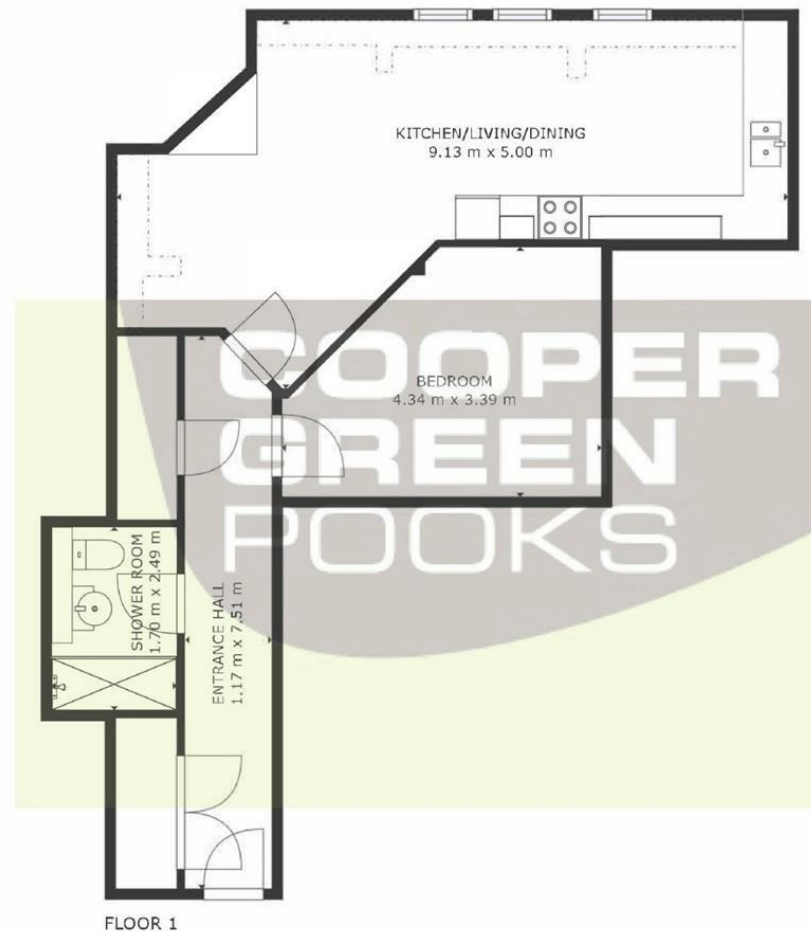
Unfurnished

Council Tax Band: A

Available: 15th August 2025

EPC: B

## Floor Plans



GROSS INTERNAL AREA  
FLOOR 1: 57 m<sup>2</sup>, EXCLUDED AREAS:  
REDUCED HEADROOM BELOW 1.5M: 4 m<sup>2</sup>  
TOTAL: 57 m<sup>2</sup>  
SIZES AND DIMENSIONS ARE APPROXIMATE, ACTUAL MAY VARY.



These particulars, whilst believed to be accurate are set out as a general outline only for guidance and do not constitute any part of an offer or contract. Intending purchasers should not rely on them as statements of representation of fact, but must satisfy themselves by inspection or otherwise as to their accuracy. No person in this firm's employment has the authority to make or give any representation or warranty in respect of the property.